

Fire Strategy Key

Notes:

DRAWINGS TO BE READ IN CONJUNCTION WITH ALL OTHER FIRE STRATEGY DRAWINGS - "U-SERIES".

All new steelwork / structure to receive intumescent paint finish to give 60mins fire rating REI

Product performance classification for all circulation routes to be Class 0 surface spread of flame.

Corridor doors, as indicated on plans, to be fitted with magnetic hold open devices, linked to fire alarm system. All hold open doors to have a minimum of 50mm clearance to edge of door leaf to allow for magnetic hold open hardware fixings.

All services within risers penetrating compartment floors / walls to be fitted with fire dampers to maintain fire integrity.



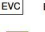
All partitions to be taken to under side of compartment floors.

All elements of structure to achieve min 60min Fire Resistance.

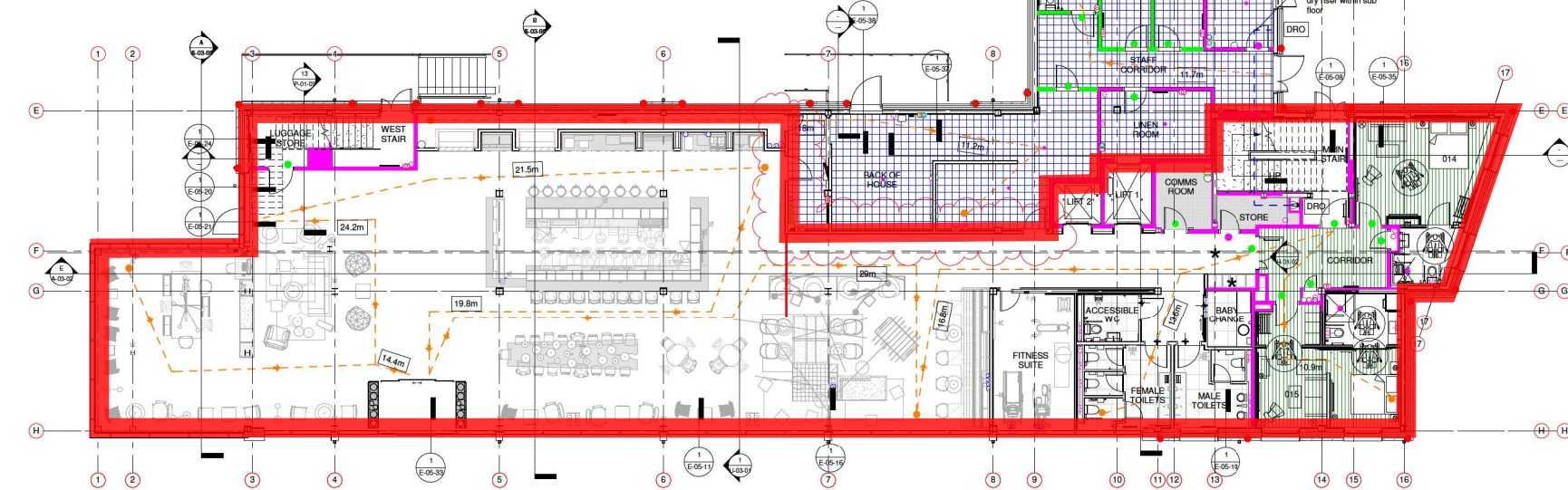
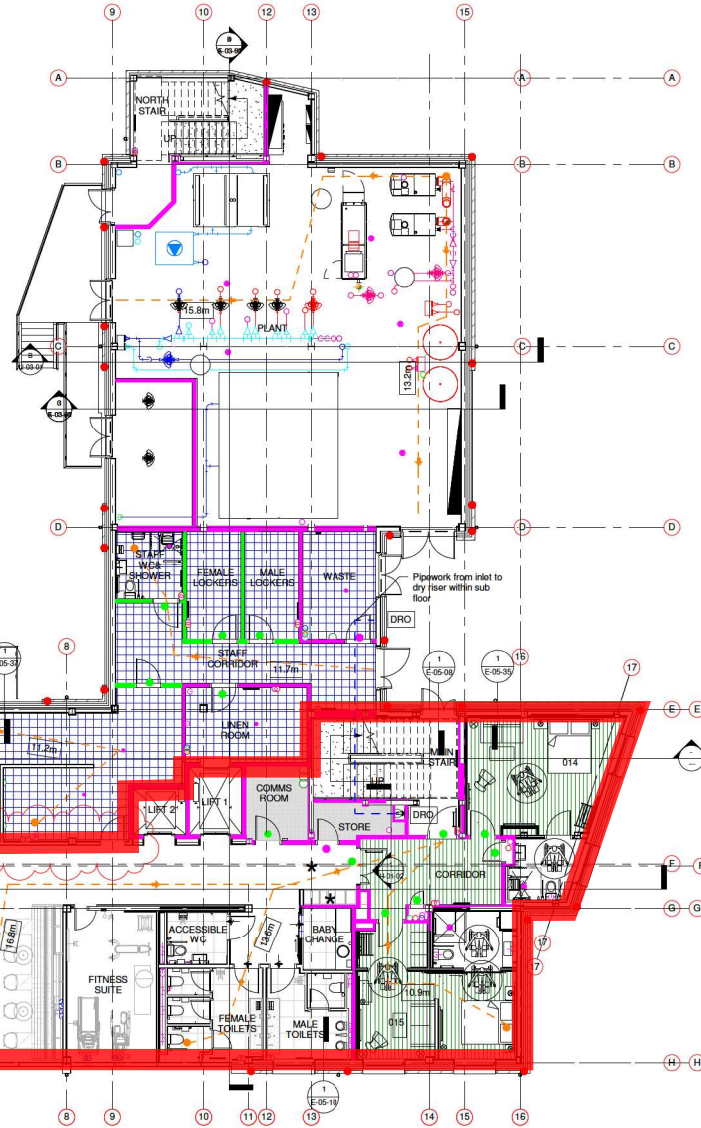
All Fire Strategy to be in line with and meet Moxy Brand Standards

Hold open devices to be deactivated upon:- Activation of fire alarm, any loss of power to the hold open device, operatus or switch. Manually operated switch fitted in a position at the door. *Smoke detectors to be fitted either side of the door positioned not less than 500mm and not more than 3000mm from the door.

All fire escape door to be fitted with escape ironmongery.

- Compartment wall / floor achieving 60 minutes fire resistance rating REI - (Stability, integrity and insulation) in accordance with BS476:part9/20:24 and relevant recommendations of appendix A of the technical guidance document B, and in the case of a wall is to extend full storey height.
- - - - Compartment ceiling achieving 60 minutes fire resistance rating from bedroom side only. As per Woodbaton drawing 08PS17-400_A - 402.8 for slab BU57.
- Compartment wall / floor achieving 30 minutes fire resistance rating REI - (Stability, integrity and insulation) in accordance with BS476:part9/20:24 and relevant recommendations of appendix A of the technical guidance document B, and in the case of a wall is to extend full storey height.
- Continuous Cavity Barriers within ceiling voids to be at 20m crs max.
- Full depth Cavity Barriers within external cavity wall.
- Ventilated Cavity Barriers within external cavity wall.
- FD60SC fire door (all fire doors to be self closing). To be fitted with smoke seals and comply with BS 476-31 or BS EN 1634-3 (smoke leakage) and BS 476-22 or BS EN 1634-2 (fire resistance).
- FD30SC fire door (all fire doors to be self closing). To be fitted with smoke seals and comply with BS 476-31 or BS EN 1634-3 (smoke leakage) and BS 476-22 or BS EN 1634-2 (fire resistance).
- ★ Doorset to be fitted with a hold open device capable of closing the door from any angle and against any latch fitted to the door. Device should release on: actuation of the fire alarm; manual operation or operation of a hand-operated switch; and the failure of the electricity supplies.
- ??,?m Indicative travel distance.
- Direction of escape
-  Disabled refuge space (1400mm x 900mm) in accordance with BS5588:part8
-  Dry Riser Outlet rising main to unventilated lobby conforming to BS5306:part1
-  Emergency voice communication equipment
- Mastic seal to be provided to create smoke tight seal around ventilation ducts when the penetrate the ventilation shafts in the wallboxes and enter the duct enclosure. Refer to drawing U-05-01.

—— Licensed Area



1 GROUND FLOOR - FIRE STRATEGY PLAN
Scale: 1 : 100

© COPYRIGHT OF CUMMING AND CO (BERKEEN) LTD
This drawing cannot be reproduced or used in anyway without the express written permission of the aforementioned. All design intent and content is copyright of the aforementioned.

Date	No.	Description
27-05-18	C	Half hour FR doors and wall removed to BOH
20-05-18	B	Cavity Barriers Added per Building Control
28-07-18	A	Sprrinkler Pump Room & Access now required Tase

Drawing Status: RIBA STAGE 5 - CONSTRUCTION

alston house
6 castlehill
aberdeen
ab11 5sq

tel 01224 355800
fax 01224 350603
info@cummingandco.com
www.cummingandco.com



CLIENT: VASINI HOSPITALITY B.V.
PROJECT: MOXY HOTEL - YORK

CONTENT: FIRE STRATEGY - GROUND FLOOR

SCALE: As indicated @ A1 DATE: JAN 18

JOB REFERENCE	DRAWING	REV
17-030	U-01-01	C
	DRAWN BY: FM	CHECKED BY: PM